

# Review and Development of Northern Cape **DISTRICT & MUNICIPAL SPATIAL DEVELOPMENT FRAMEWORKS**

## DISTRICT MUNICIPALITIES

◆ John Taolo Gaetsewe    ◆ Namakwa    ◆ ZF Mgcawu

## LOCAL MUNICIPALITIES

◆ Dawid Kruiper    ◆ Kai !Garib

**Phase 1:** Project Inception | PSC Meeting

August 2022



# CONTACT US



agriculture, land reform  
& rural development

Department:  
Agriculture, Land Reform and Rural Development  
REPUBLIC OF SOUTH AFRICA

Gehard de Bruin



082 827 6264



gerhardus.debruin@dalrrd.gov.za

Mpholodi Masehla



083 732 2928



mpholodi.masehla@dalrrd.gov.za

Janco du Plessis



072 734 8146



janco.duplessis@dalrrd.gov.za

Gerrit Botha - Office of the Premiere



060 742 1575



gbothaotp1@gmail.com

TSHANI  
CONSULTING C.C.

Project Lead

Darshika Makan



067 868 9309



darshika@tshani.co.za

Kreason Naidoo



082 940 2502



kreason@tshani.co.za

Town Planning Support

Nobubele Zulu



067 867 3788



nobubele@tshani.co.za

Success Ngobeni



067 868 9302



success@tshani.co.za

Nadine Ponnusamy



082 515 3077



nadine@tshani.co.za

Tracin Govender



083 596 6012



tracin@tshani.co.za



Tinus Galloway - ZF Mgcawu



074 345 1268



tgalloway@zfm-dm.gov.za



Jeremy du Plessis



082 399 2705



jeremy.duplessis@dkm.gov.za



Jannie Loubser



083 252 3136



jtloubser@gmail.com | jtloubser12@gmail.com



Gerrie van der Westhuizen



082 459 9254



vanderwesthuizeng@taologaeatsewe.gov.za



Tinus Galloway



074 345 1268



tgalloway@zfm-dm.gov.za



# INTRODUCTION AND BACKGROUND



# INTRODUCTION

The Department of Agriculture, Land Reform and Rural Development (DALRRD) has appointed **Tshani Consulting CC** to Review the **Spatial Development Frameworks** for the following District and Local Municipality's:

- ZF Mgcawu District Municipality;
- John Taolo Gaetsewe District Municipality;
- Namakwa District Municipality;
- Dawid Kruiper Local Municipality; and
- Kai! Garib Local Municipality

This presentation to the Project Steering Committee aims to highlight **Phase 1: Project Inception** of the SDFs. The presentation will outline the methodology of the SDFs development as well as the consultation process and project timeframes.



# PROJECT OBJECTIVES



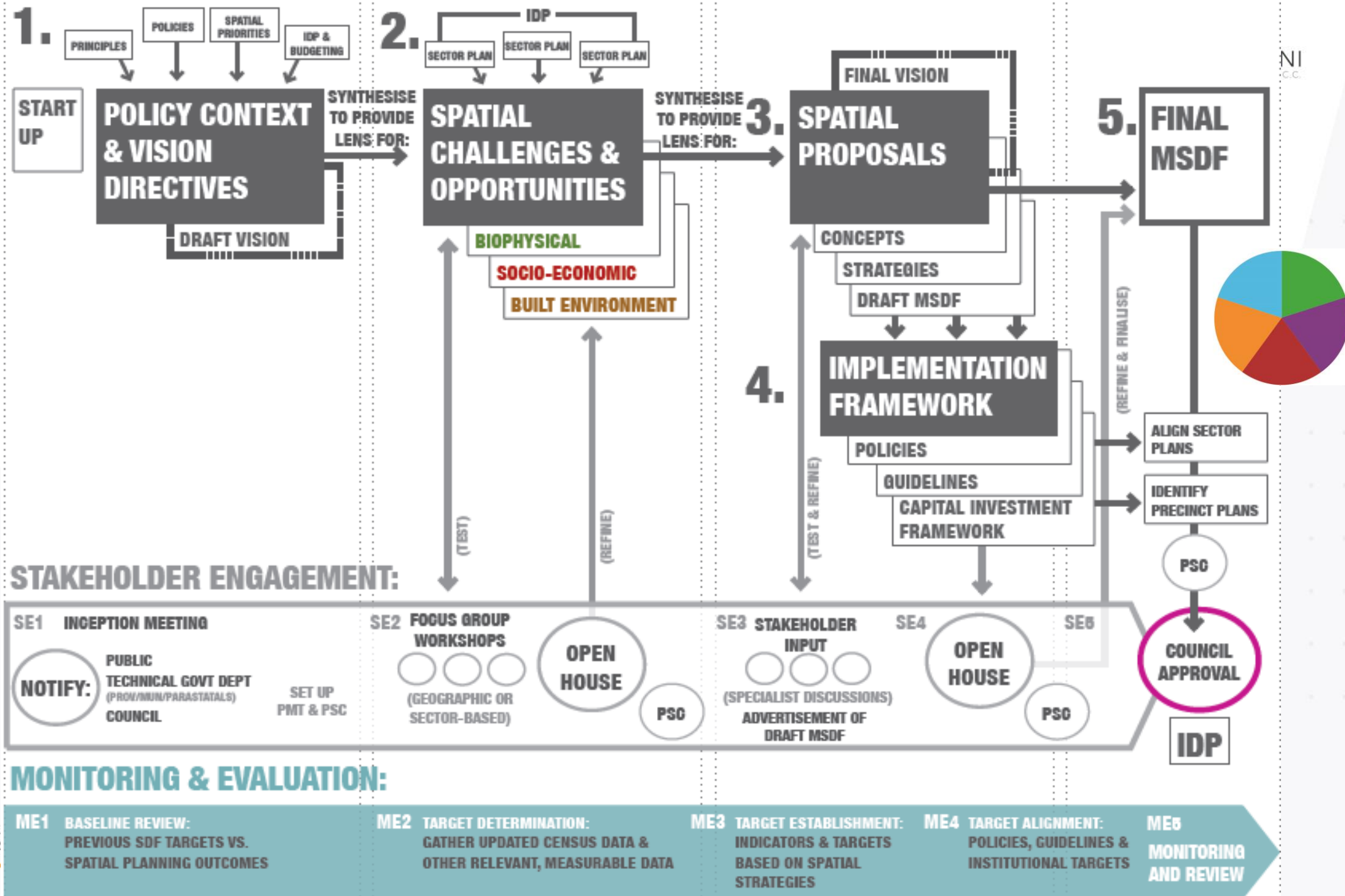
The key objectives of the project include:

- Alignment with relevant legislation such as **SPLUMA, MSA and NEMA** requirements;
- Review of the **spatial vision** and **objectives** of the IDP and the whole municipality;
- Development of a **conceptual scenario** for envisaged spatial form;
- Setting out of objective that reflect the **desired spatial form** of the municipality;
- Analysis and clarification of how sector departments will **implement** the SDFs;
- Protection of the natural environment e.g. **Conservation Corridors, Green Wedges, Biodiversity areas etc;**
- Include areas where potential growth / expansion



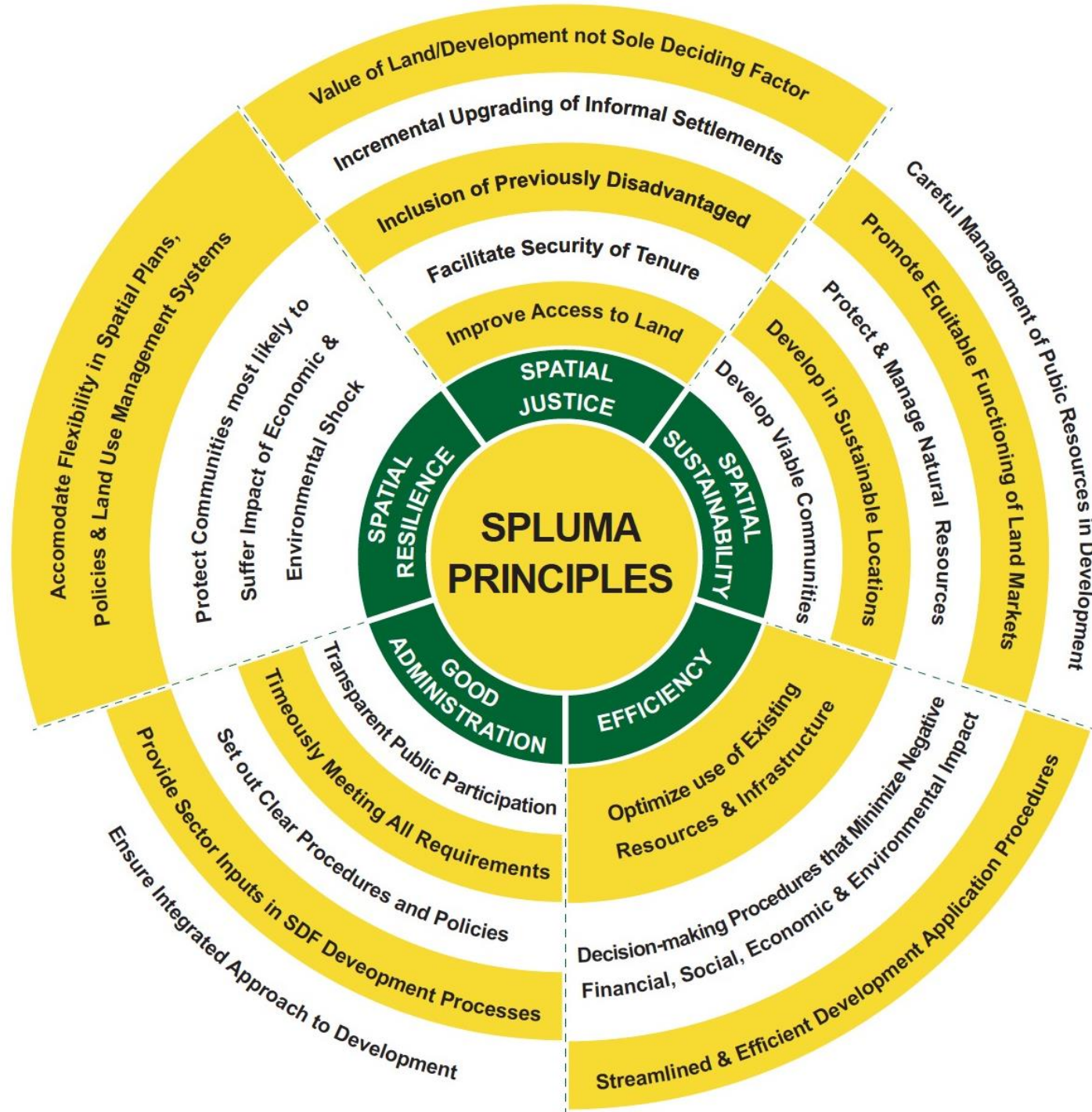
# SDF GUIDELINES – SDF PROCESS

Review and Development  
DISTRICT & MUNICIPAL





# SPLUMA PRINCIPLES





# PROJECT PHASES



**PHASE 1:**

Project Inception

**PHASE 2:**

Status Quo analysis, Policy Context and Spatial Vision

**PHASE 3:**

Spatial & Sectoral Analysis and Stakeholder Consultation

**PHASE 4:**

Spatial Proposals

**PHASE 5:**

Implementation Framework and CEF

**PHASE 6:**

Final Comprehensive SDF, Close-Out and Retention



# PROJECT AREA



# PROJECT LOCALITY

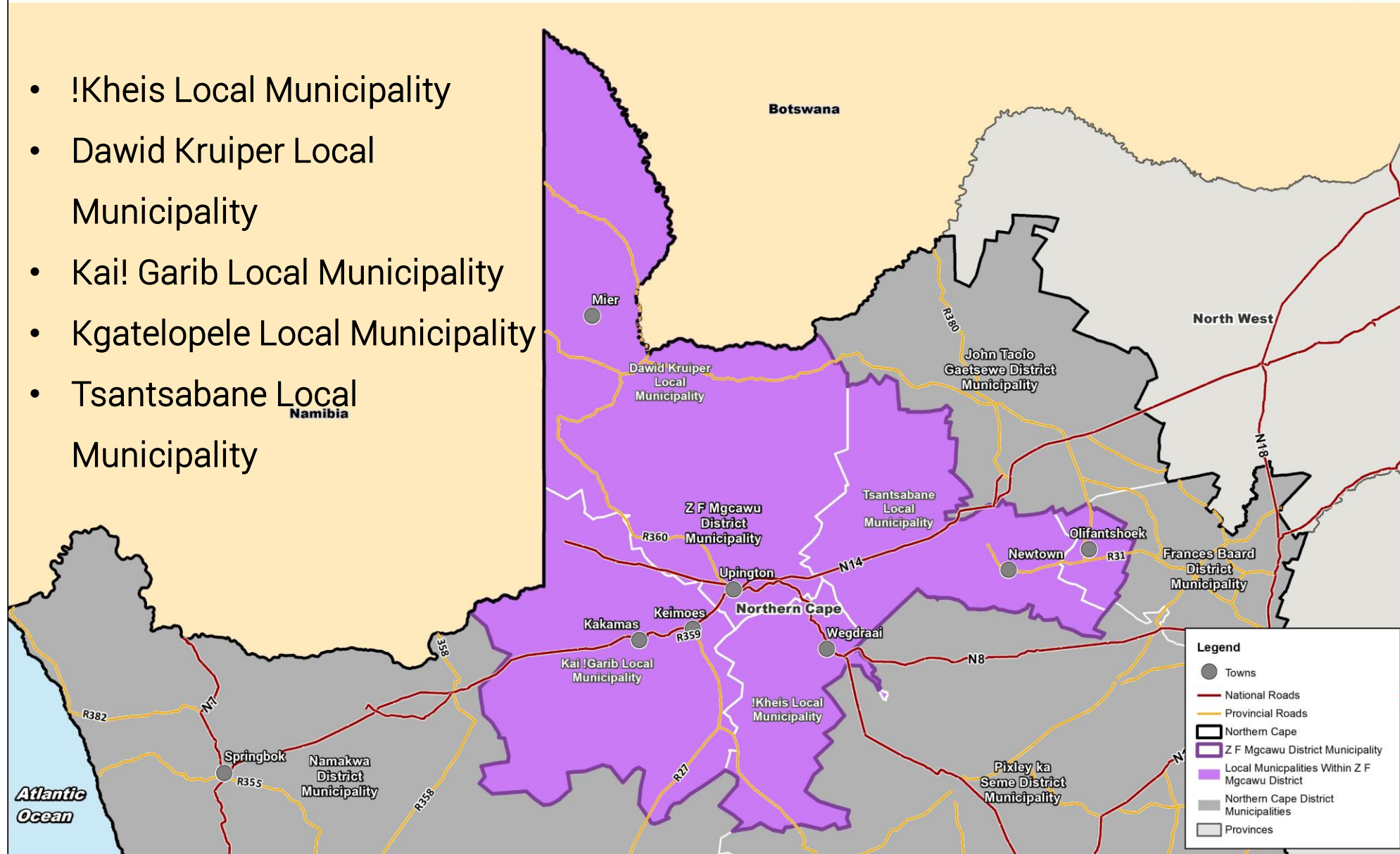
## ZF Mgcawu

### Z F MGCWA DISTRICT MUNICIPALITY SPATIAL DEVELOPMENT FRAMEWORK REVIEW

#### DISTRICT LOCALITY PLAN

1:2 500 000

- !Kheis Local Municipality
- Dawid Kruiper Local Municipality
- Kai! Garib Local Municipality
- Kgatelopele Local Municipality
- Tsantsabane Local Municipality





# PROJECT LOCALITY

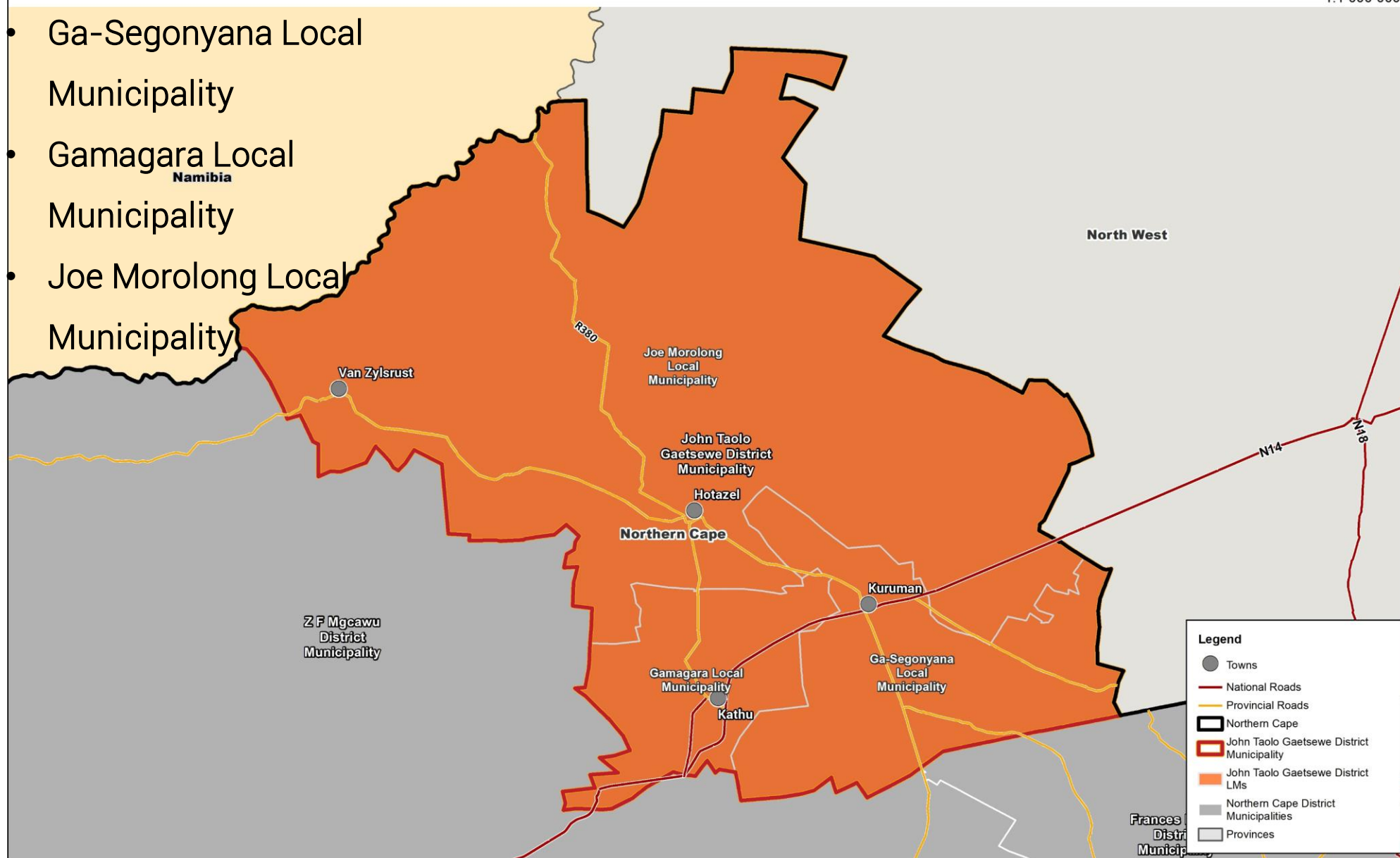
## John Taolo Gaetsewe

### JOHN TAOLO GAETSEWE DISTRICT MUNICIPALITY SPATIAL DEVELOPMENT FRAMEWORK REVIEW

#### DISTRICT LOCALITY PLAN

1:1 000 000

- Ga-Segonyana Local Municipality
- Gamagara Local Municipality
- Joe Morolong Local Municipality



Review and Development of Northern  
DISTRICT & MUNICIPAL SPATIAL DEVELOPMENT FRAMEWORK

**TSHANI**  
CONSULTING C.C.

agriculture, land reform  
& rural development  
Department of Agriculture, Land Reform and Rural Development  
REPUBLIC OF SOUTH AFRICA



AUGUST 2022

John Taolo Gaetsewe District Municipality | Department of Transport | Municipal Demarcation Board | Statistics SA  
Department of Education | SANBI | Department of Co-operative Governance and Traditional Affairs | Eskom



# PROJECT LOCALITY

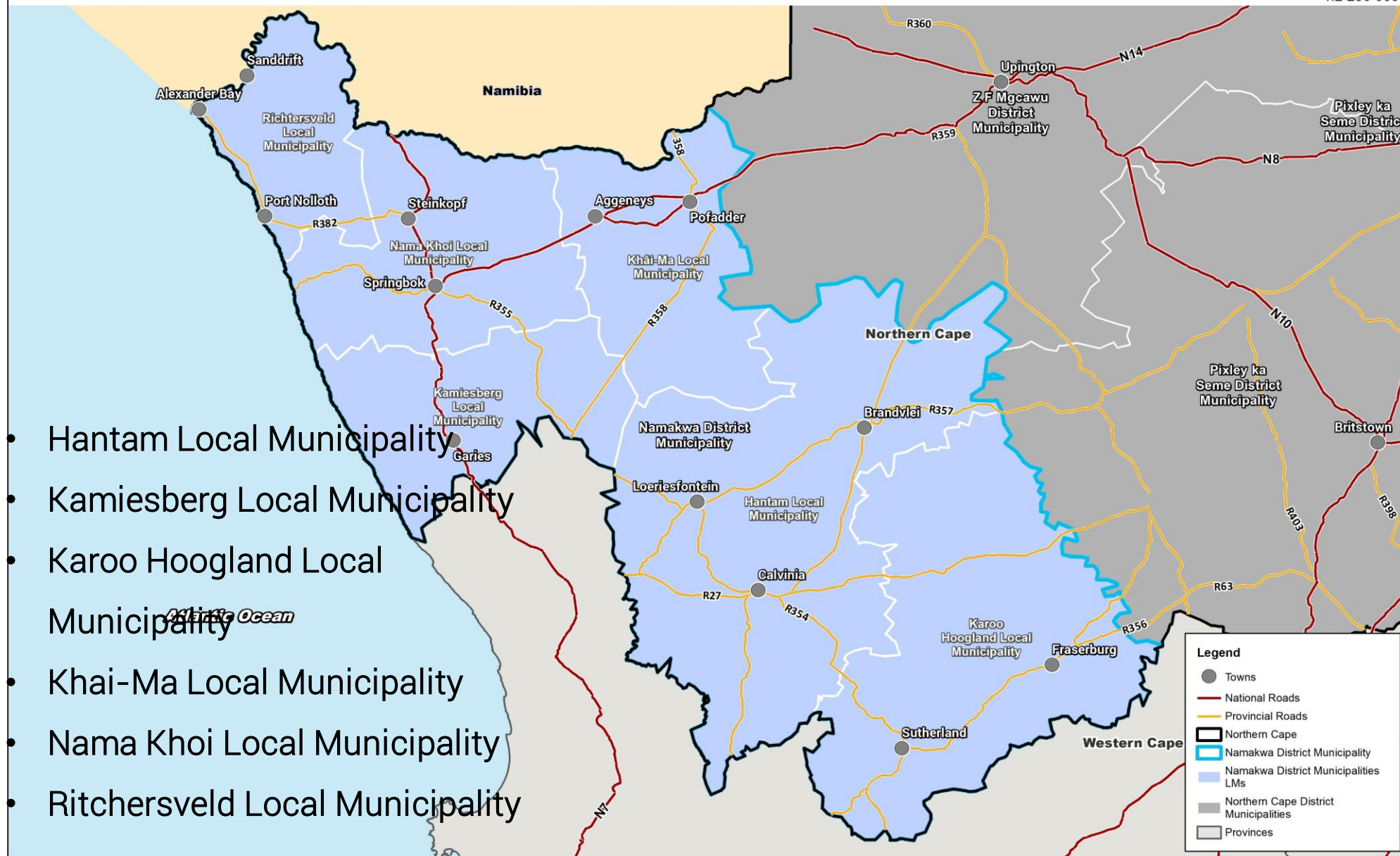
## Namakwa

### NAMAKWA DISTRICT MUNICIPALITY SPATIAL DEVELOPMENT FRAMEWORK REVIEW

#### DISTRICT LOCALITY PLAN

1:2 250 000

- Hantam Local Municipality
- Kamiesberg Local Municipality
- Karoo Hoogland Local Municipality
- Khai-Ma Local Municipality
- Nama Khoi Local Municipality
- Richtersveld Local Municipality



**Legend**

- Towns
- National Roads
- Provincial Roads
- Northern Cape
- Namakwa District Municipality
- Namakwa District Municipalities LMs
- Northern Cape District Municipalities
- Provinces



# PROJECT LOCALITY

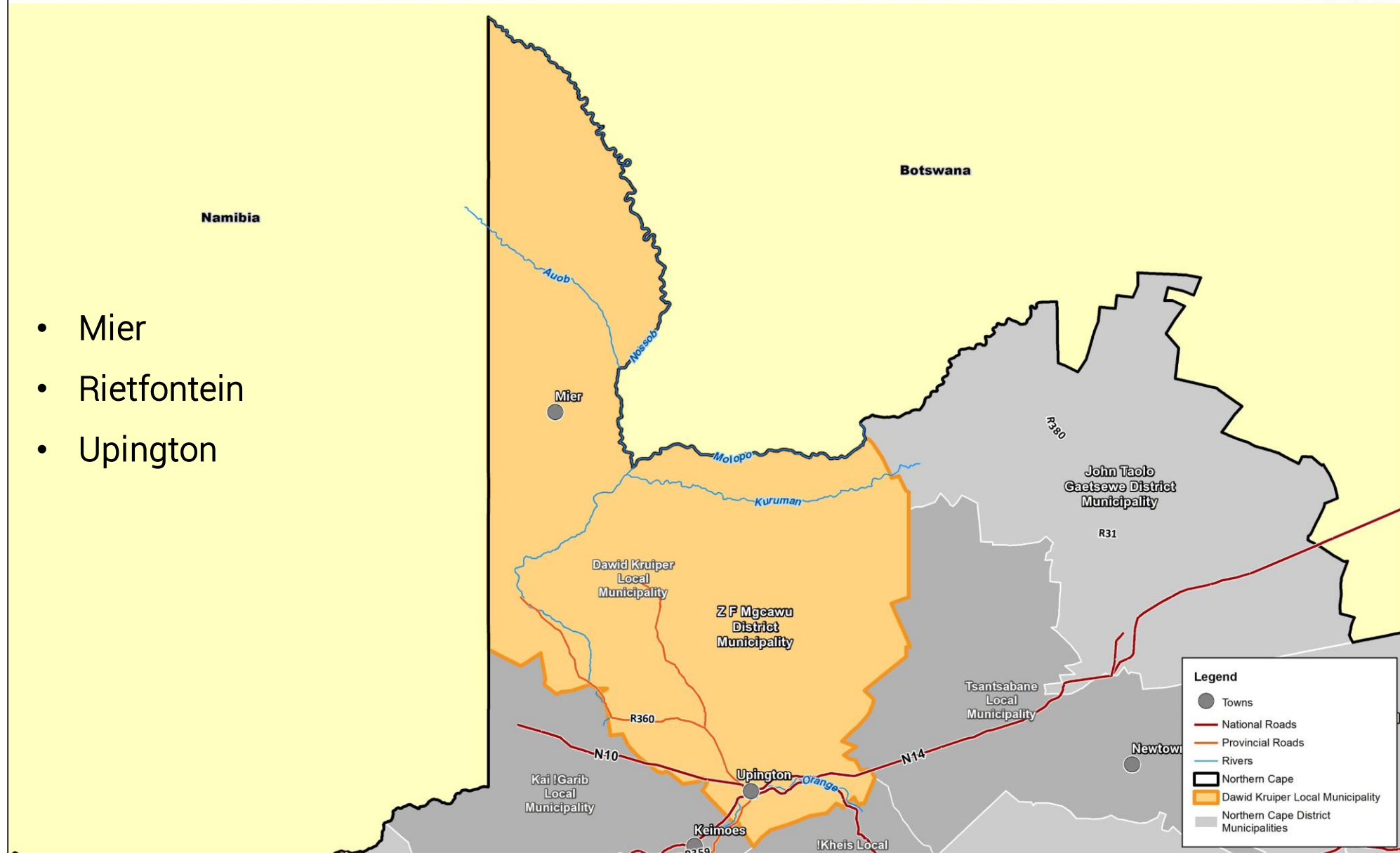
## Dawid Kruiper

### DAWID KRUIPER LOCAL MUNICIPALITY SPATIAL DEVELOPMENT FRAMEWORK REVIEW

#### LOCAL LOCALITY PLAN

1:1 800 000

- Mier
- Rietfontein
- Upington





# PROJECT LOCALITY

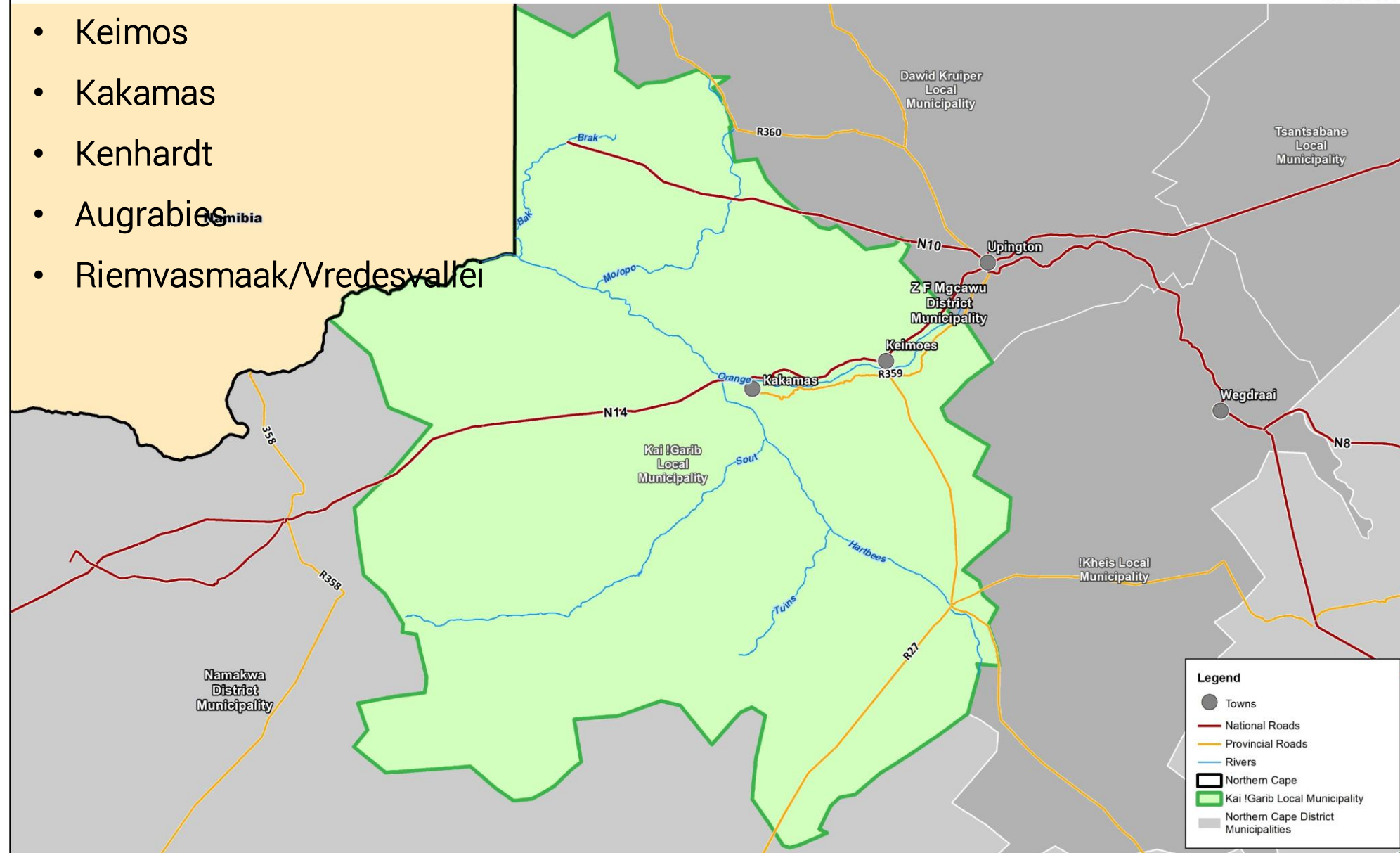
## Kai! Garib

### KAI! GARIB LOCAL MUNICIPALITY SPATIAL DEVELOPMENT FRAMEWORK REVIEW

#### LOCAL LOCALITY PLAN

1:1 000 000

- Keimos
- Kakamas
- Kenhardt
- Augrabies
- Riemvasmaak/Vredesvallei





# PROJECT METHODOLOGY



# PHASE 1: PROJECT INCEPTION

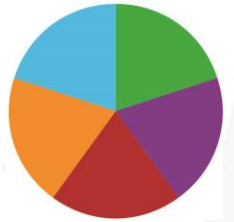
The following will be completed within the Phase:

- Project Plan
- Finalisation of Project Methodology,
- Outline of Stakeholder Consultation,
- Project Timeframes,
- Developing the Project Stakeholder List
- Project Branding
- Social Media





# PARTICIPATION AND DELIVERABLES



The Phase Deliverables are as follows:

- Inception Report
- Signed SLA
- Detailed work plan (Gantt Chart)
- Social Media and Branding
- Project Steering Committee Meeting 1
- Meeting Minutes

Timeframe

- Two (2) Weeks/ 0,5 Months

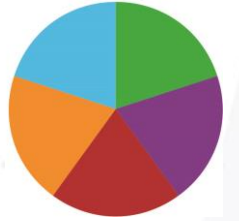
The Phase Communication are as follows:

- Introductory Meeting
- Project Steering Committee Meeting
- Launching Social Media
- Project Branding



# PHASE 2: STATUS QUO ANALYSIS, POLICY CONTEXT, AND SPATIAL VISION

The following will be completed within the  
Phase:

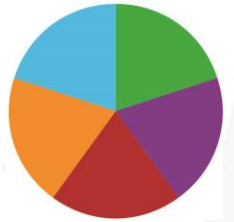


- Detailed analysis of policies, programmes, tends at national, district and local levels
- Status Quo
- Identification of Key Issues
- Formulate Draft Vision





# POLICY CONTEXT



The following will be completed within the Phase:

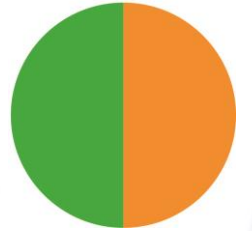
- Detailed analysis of policies, Legislation, programmes, tends
- At a National, Provincial, District and Local Levels

The Policy Alignment will include but will not be limited to:

- NSDF, NSDP
- PGDS, PSDF
- DDM, DSDF, District IDP, Rural Development Plans, etc.
- Previous MSDF, LSDF's (where applicable)



# POLICY CONTEXT



The Policy Alignment for Local Municipal SDFs will also include:

- Sector Plans
- LSDFs – where applicable
- Business Plans, Investment Plans, etc.

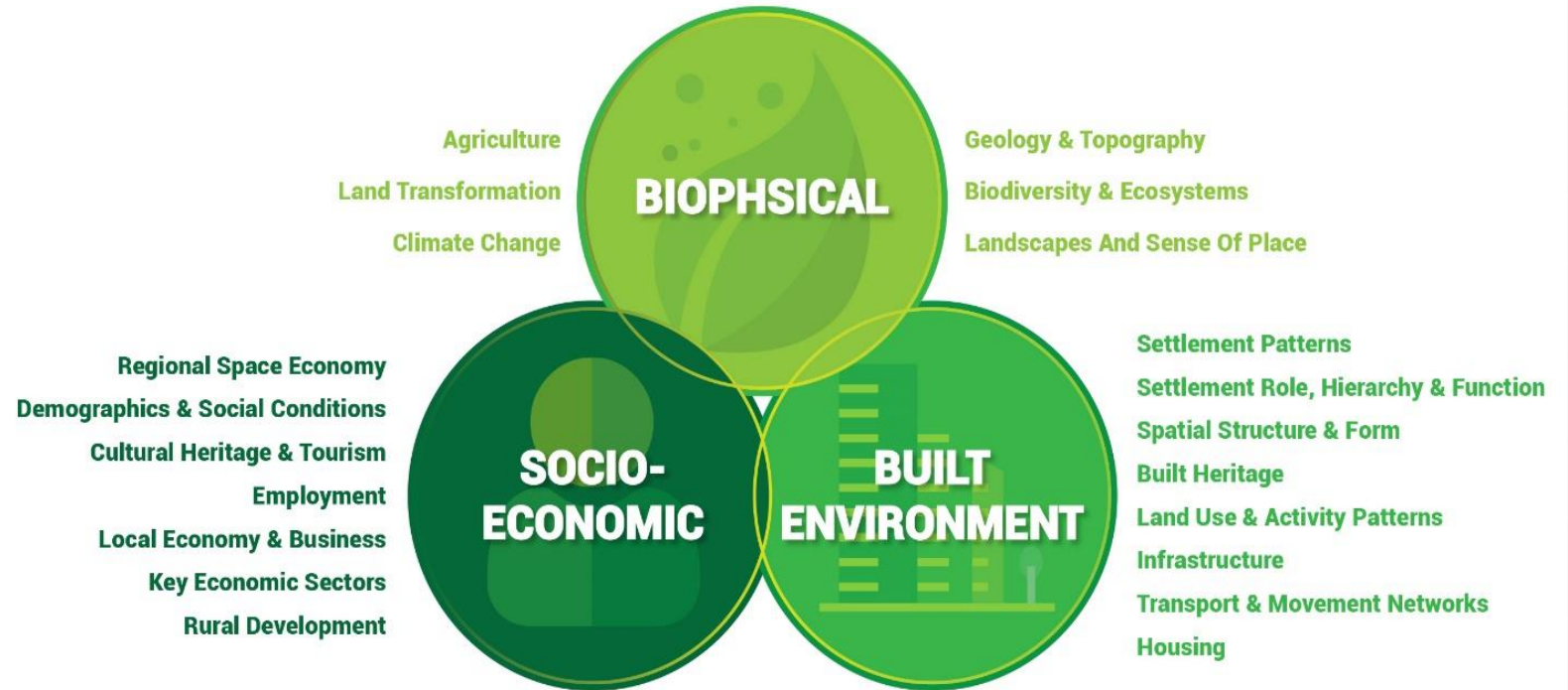


# STATUS QUO



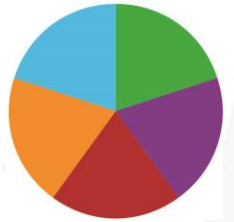
The following will be completed within this Phase:

- Biophysical,
- Socio – Economic and
- Built Environment Analysis





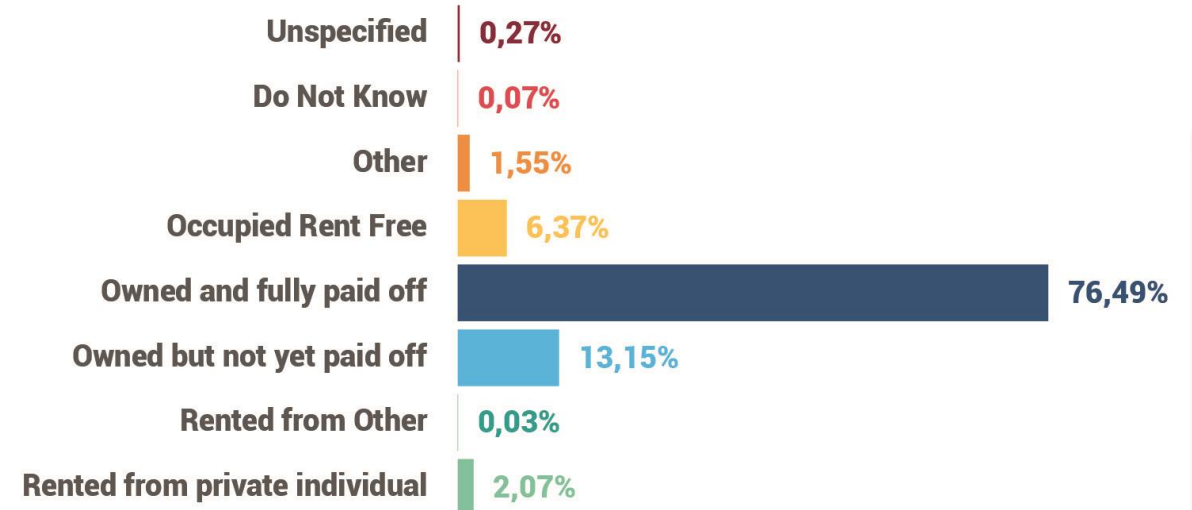
# STATUS QUO



The following will be completed within the Phase:

- Built Environment Assessment;
  - Settlement Patterns
  - Densification
  - Land Use
- Housing Assessment
- Infrastructure Assessment

## TENURE STATUS 2016





# STATUS QUO – LAND USE



Detailed Erf to Erf Land Use capturing will be done for the following towns in Dawid Kruiper and Kai Garib:

- Dawid Kruiper;
  - Mier
  - Rietfontein
  - Upington
- Kai Garib;
  - Keimos
  - Kakamas
  - Kenhardt
  - Augrabies
  - Riemvasmaak/Vredesvallei
  - Marchand
  - Alheit
- Cillie
- Lutzburg
- Lennertsville
- Soverby
- Curriescamp
- Bloemsmond
- Cannon Island



# STATUS QUO

The following will be completed within the Phase:

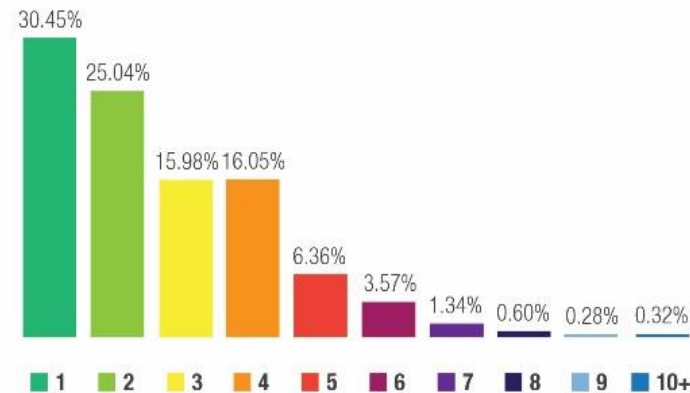
- Socio Economic Assessment;
  - Demographic Assessment
  - Social Facilities Assessment
  - Economic Assessment
  - Tourism Assessment
  - Employment Status



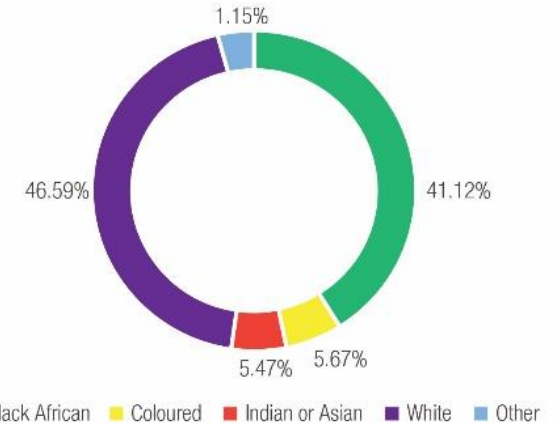
Highest population group are  
**0-4 (1386 people) &  
15-19 (1344 people)**



## HOUSEHOLD SIZE



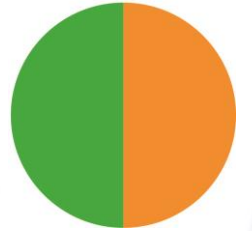
## POPULATION GROUP



**54%  
Female**



# STATUS QUO



At a Municipal Level, we will also conduct the following at a Ward level

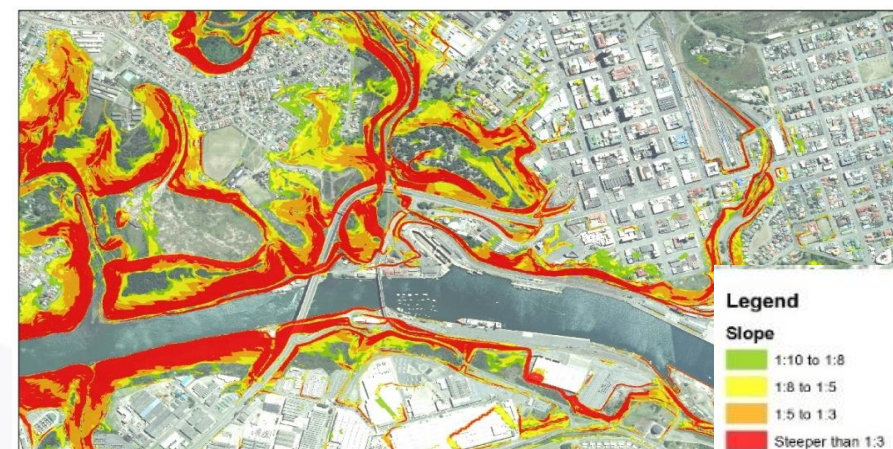
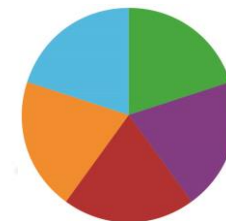
- Population per ward
- Access to basic services
  - Heating
  - Lighting
  - Sanitation
  - Tap water



# STATUS QUO

The following will be completed within the Phase:

- Biophysical Assessment
  - Gap and Fatal Flaw Analysis
  - Climate Change
  - Biodiversity and Eco Systems
  - Vegetation
  - Forestry
  - Agriculture
  - Geology





# DRAFT ISSUES VISION

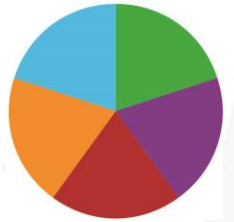


In conclusion of this phase, we will do the following

- Extract Key Issues pertaining to the municipal area based on the Status Quo Analysis, and current documentation
- We will develop a draft vision based on the above and based on alignment on the visions from the NSDF, PSDF, and Previous District and Local SDF's



# PARTICIPATION AND DELIVERABLES



The Phase Communication are as follows:

- Draft Status Quo Video
- Technical Working Committee Meeting
- Project Steering Committee Meeting
- Social Media update

The Phase Deliverables are as follows:

- Policy Context and
- Draft Vision
- Consolidated Situation Analysis Report
- Minutes of the Consultation Sessions

Timeframe

- One (1) Month / Four (4) Weeks



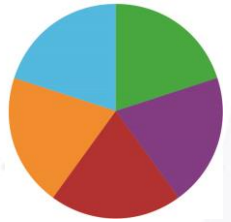
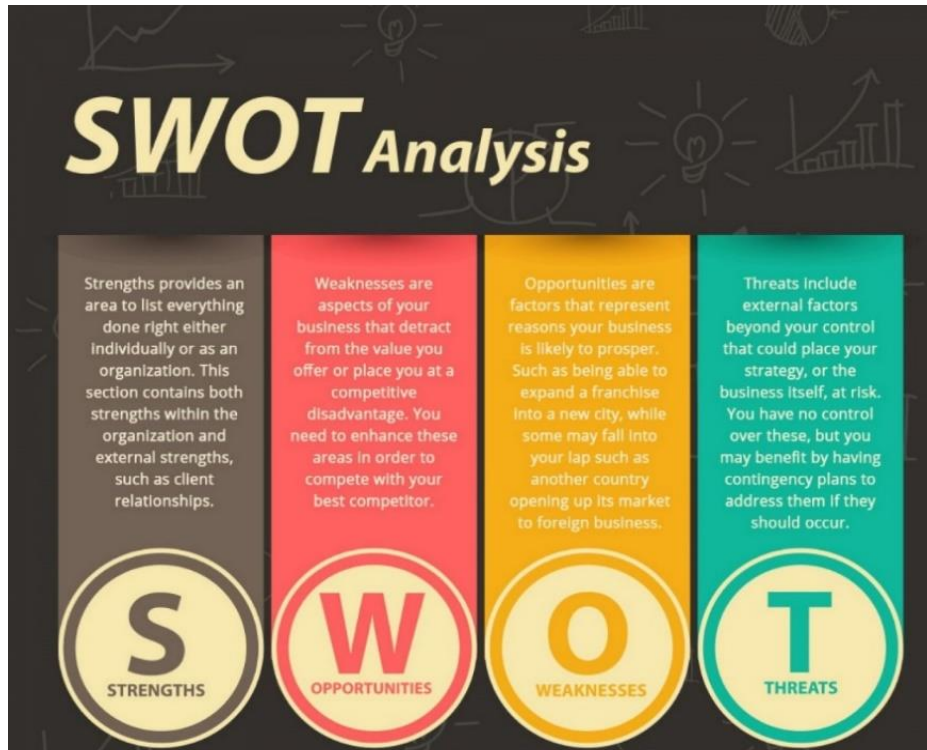
# PHASE 3:

# SPATIAL & SECTORAL ANALYSIS AND STAKEHOLDER CONSULTATION



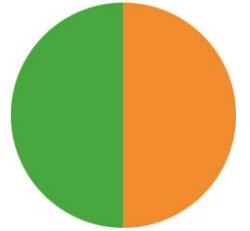
# SWOT ANALYSIS

- We will conduct a workshop in each district regarding the District SDF and within each Local Municipality regarding the MSDFs
- The workshop will unpack the SWOT Analysis and Key Issues pertaining to the respective area
- And a visioning exercise foreseeing a 20-30 year projection.





# ONE-ON-ONE MEETINGS



- We will conduct one on one meetings with sector departments to obtain their input on experiences within the area
- One on one meetings will also be held with Farmers Associations and Business Forums for the Local Municipal SDFs



# CROSS BORDER ALIGNMENT



- We will also conduct an assessment regarding the neighbouring municipal and District spatial plans to understand the cross border issues
- This will include the linkage with Namibia and Botswana



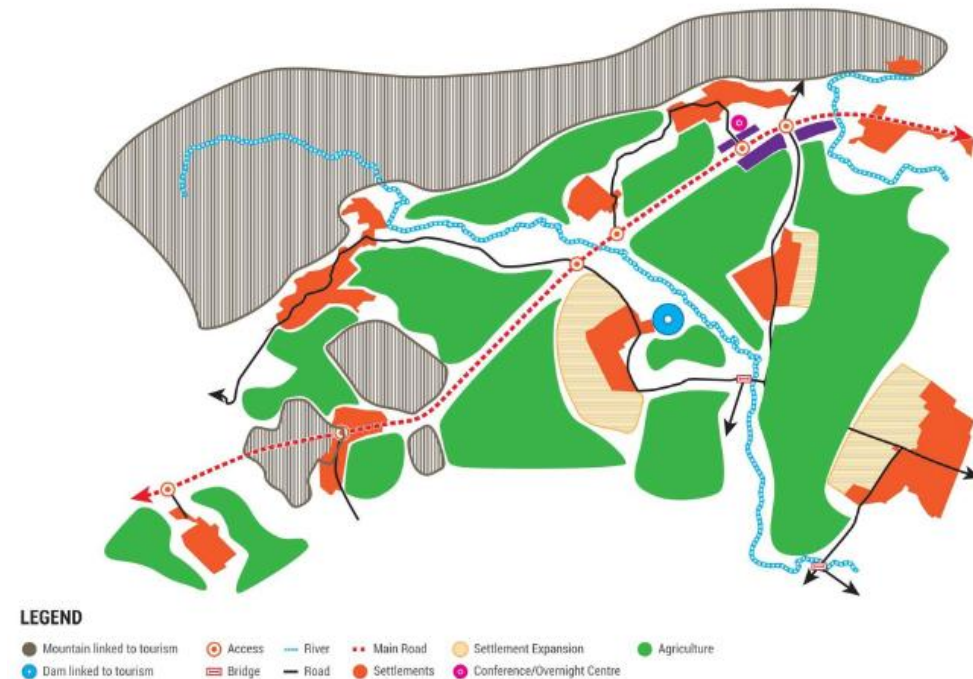
# DEVELOPMENT PERSPECTIVE



The following will be completed within the Phase

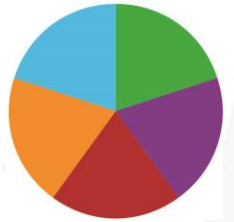
- Conceptual Framework;
- Scenario Planning;
- Spatial Design Guidelines
- Spatial structuring Elements
- Goals and Objectives

CONCEPT PLAN





# PARTICIPATION AND DELIVERABLES



The Phase Deliverables are as follows:

- Cross Border Alignment
- Final Key Issues
- Workshop
- Final Draft Vision
- Development Perspective

Timeframe

- Two (2) Months / Eight (8) Weeks

The Phase Communication are as follows:

- Workshop
- Project Steering Committee Meeting
- Social Media update





The following will be completed within the Phase

- Spatial Proposals
  - Tools to facilitate urbanization or migration onto strategic development
  - Proposal on strategic to facilitate the linkage between urban and rural areas
  - Proposal on strategies to link areas with economic potential to those of high household poverty
  - Proposals/guidelines on how to integrate informal settlements in the area and the providing details regarding their future development and expansion potential
- Land Use Management Guidelines

# PHASE 4: SPATIAL PROPOSALS



# DRAFT SDF



The following sectors will be focused on:

- **Built Environment Framework**

- *Nodes and Settlements*
- *Urban Edge*
- *Settlement Edges*
- *Activity Corridors*
- *Transition Areas*
- *Environmental Areas*
- *Integration Zones*
- *Infrastructure Framework*

- **Socio-Economic Framework**

- *Local Economic Development*
- *Economic Framework*
- *Tourism Framework*
- *Social Facility Proposals*
- *Rural Development Framework*
- *Governance and Institutional Framework*

- **Biophysical Framework**

- *Critical Biodiversity Areas*
- *Environmental and Ecological Corridors*
- *Open Space Corridor*
- *Agriculture Framework*



# PARTICIPATION AND DELIVERABLES

## The Phase Communication are as follows:

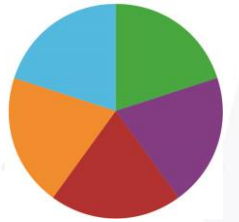
- Technical Working Committee Meeting
- Project Steering Committee Meeting
- Stakeholder Meetings

## The Phase Deliverables are as follows:

- Draft SDF Report including Spatial Proposals
- Minutes of the Participation

## Timeframe

- Two(2) Months / Eight (8) Weeks





# PHASE 5: IMPLEMENTATION FRAMEWORK AND CEF



# IMPLEMENTATION FRAMEWORK



The Framework will be focused on:

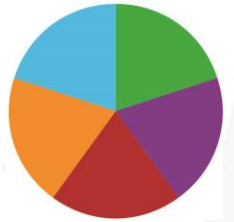
- Capital Expenditure Framework
- A monitoring tool will be developed in order for the municipality to monitor their process.
- Identification of Functional areas.
- Develop an Implementation Plan with Timelines and Deliverables
- Develop cost estimates.







# PARTICIPATION AND DELIVERABLES



The Phase Communication are as follows:

- Technical Working Committee Meeting
- Project Steering Committee Meeting
- Draft Marketing Brochure
- Social Media update

The Phase Deliverables are as follows:

- Draft SDF Report
- Implementation Plan and Capital Investment Framework
- Minutes of the Participation

Timeframe

- One and a Half (1,5) Months / Six (6) Weeks



# PHASE 6: FINAL COMPREHENSIVE SDF, CLOSE-OUT & RETENTION



# PARTICIPATION



The Project Consultation will include the following

- Gazette for 60 days for Comment
- Technical Working Committee
- Project Steering Committee
- Workshop
- Send out to I&AP
- Sessions with Ward Councilors and Ward Committee members
- Copy of the SDF to be placed in libraries



# PARTICIPATION



The Project Marketing will include the following:

- Social Media - Facebook;
- Project Branding;
- Brochure / Executive Summary
- Posters
- Video





# PARTICIPATION AND DELIVERABLES

The Phase Communication are as follows:

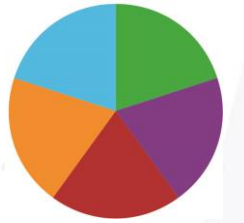
- Technical Working Committee Meeting
- Project Steering Committee Meeting
- Stakeholder Engagement/ Workshop
- Gazette
- Presentation to Council
- Social Media update

The Phase Deliverables are as follows:

- Advertising of the SDF
- Stakeholder Engagement Report
- Consolidated Consultation Report
- Final Draft SDF Report
- Final Handover

Timeframe

- Two (2) Months / Eight (8) Weeks

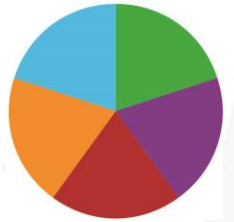




# PROJECT TIMEFRAMES



# PROJECT TIMEFRAME



Aug 22   Sep 22   Oct 22   Nov 22   Dec 22   Jan 23   Feb 23   Mar 23   Apr 23   May 23

PHASE 1

PHASE 2

PHASE 3

PHASE 4

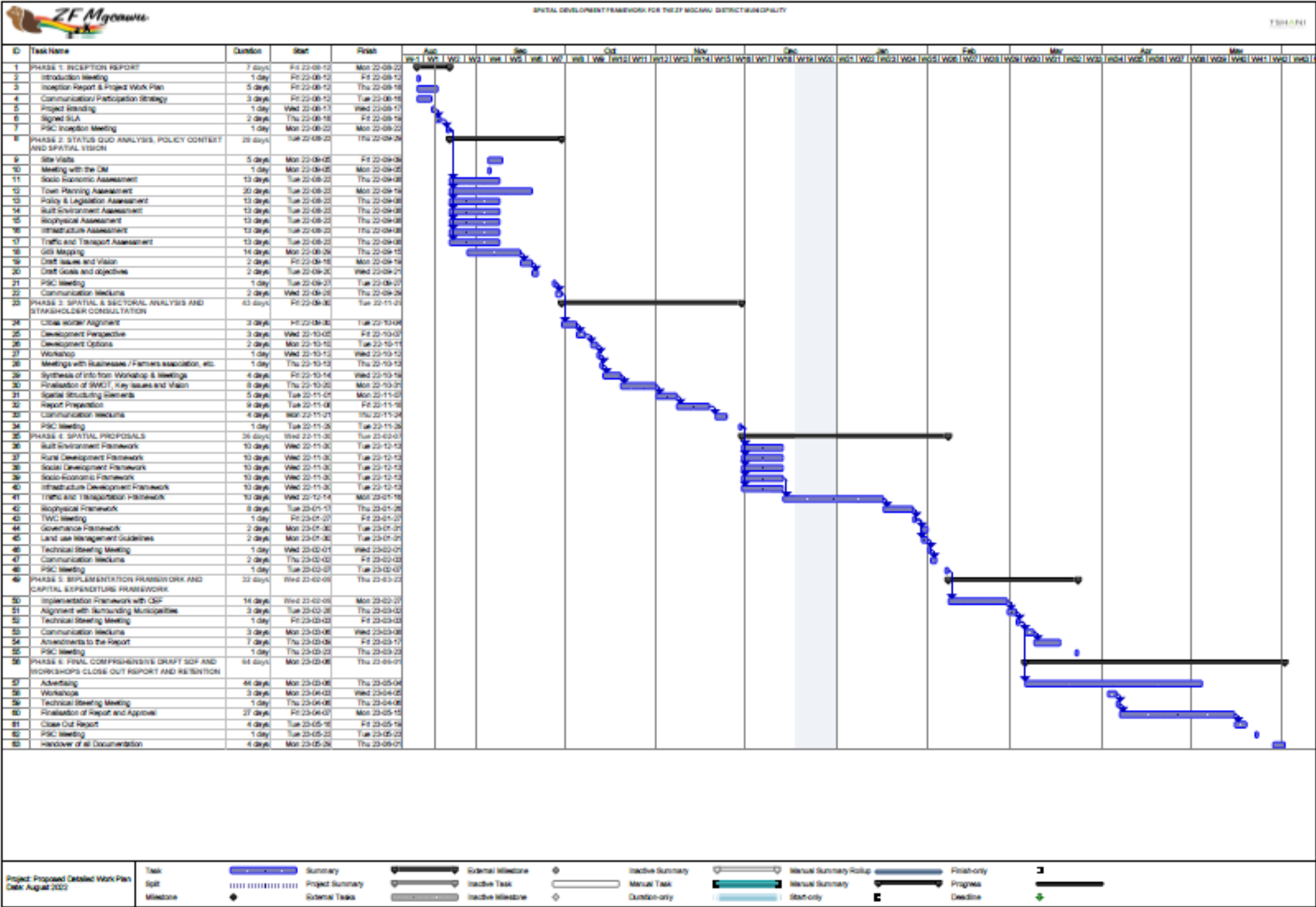
PHASE 5

PHASE 6



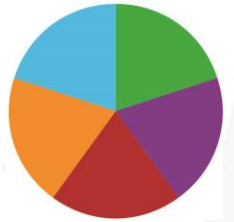
# PROJECT WORK PLAN

Review and Development of North  
DISTRICT & MUNICIPAL SPATIAL





# PROJECT TRACKING



- Monthly progress reports will be prepared and submitted to the client as well as to the District and Local Municipalities;
- Regular updates will be uploaded on the Face Book page (upon approval from the client and DM and LM).
- Regular emails will also be sent regarding project updates and development to ensure that the client and LM are always aware of the project development and status.
- Technical Meeting



# WAY FORWARD



# WAY FORWARD

- Setting up of the Facebook Page (if accepted)
- Gathering info and collecting Status Quo data
- Site Visits and Land Use capturing
- Technical Meetings
- GIS Mapping preparation
- Development of Phase 2 Report - Status Quo Analysis, Policy Context, and Spatial

